



# PC\*MILER 28

## Release Notes

Update Version 28.0.0.223  
September 23, 2014

**ALL RIGHTS RESERVED**

*You may print one (1) copy of this document for your personal use. Otherwise, no part of this document may be reproduced, transmitted, transcribed, stored in a retrieval system, or translated into any language, in any form or by any means electronic, mechanical, magnetic, optical, or otherwise, without prior written permission from ALK Technologies, Inc.*

© Copyright 2014 ALK Technologies, Inc. | 457 N Harrison Street, Princeton, NJ 08540 USA

# Table of Contents

<b>1. General Information: Updates and Patches .....</b>	<b>1</b>
• Downloading and Installing Updates and Patches .....	1
<b>2. Issues Resolved in this Release .....</b>	<b>3</b>
• General Information .....	3
• Issues Resolved .....	3
○ In Windows-Interactive.....	3
○ Specific to RouteSync.....	5
○ Specific to PC*MILER Connect .....	5
○ Specific to PC*MILER Energy .....	6
○ Specific to PC*MILER Mapping .....	6
○ Specific to PC*MILER Spreadsheets.....	6
○ Specific to PC*MILER Streets .....	6
○ Specific to PC*MILER Tolls .....	7
○ Specific to PC*MILER Traffic .....	7
<b>3. Contact Information.....</b>	<b>8</b>

# Section 1

## General Information: Updates and Patches

Between version releases, updates and patches are periodically made available as the need arises. These may include corrections to any reported errors in the software or data, or access to new data releases (for applicable products and license types\*).

Please note that patches and updates are now cumulative, meaning they include items from previously released patches/updates of the same type. ALK strongly recommends checking for the most current updates regularly.

**\*NOTE:** If a PC\*MILER product was purchased along with signing up for ALK's Annual Update Program (AUP license purchase), customers are entitled to use PC\*MILER during the term of their agreement as well as to receive software patches and data updates when and if available. AUP licensed users will have access to the base version data set as well as to any more recently released data sets as they are available, if they are downloaded and installed. For those who do not sign up for the AUP, PC\*MILER is purchased as a Perpetual license which entitles the licensed user to any available software patches released for the purchased version, and any available toll data updates if PC\*MILER|Tolls was purchased.

For more information on upgrading a Perpetual license to an AUP license, please contact an Enterprise Solutions account executive at 800-377-6453 ext. 1 or email [sales@alk.com](mailto:sales@alk.com).

### Downloading and Installing Updates and Patches:

Provided you have an Internet connection, follow the steps below to install the available updates:

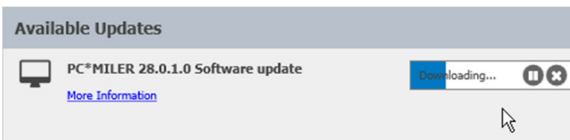
1. Close all open instances of PC\*MILER and its connectivity products. If a third-party program that accesses any PC\*MILER component is running, (for example, PC\*MILER|Connect or PC\*MILER|Mapping) it must be closed before updating.
2. Open PC\*MILER and select the Help tab > Windows group > *Check for Updates*. The PC\*MILER Updater dialog will open. The Updater first checks for valid license information and then begins checking for available updates.



- When the search for updates is complete you will see all available updates listed. In the **Download & Install** drop-down menu next to each available update, select either *Download & Install* to download and install right away or *Download* to download now and install at a later time.



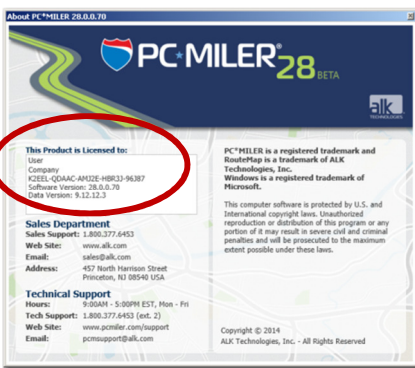
- Note the version number of the updates you will be downloading so you can check if the update installed properly (see Step 7 below).
- Selecting either option will begin the download process. You will see the progress of the download reflected in a progress bar. If any PC\*MILER related application is open, you will be prompted to close it. After closing the application(s), click **OK** to continue with the download.



- If you chose *Download and Install*, the InstallShield Wizard will open when the download is finished. Follow the instructions to complete the installation. After installing, you will see the update listed under “Installed Updates” in the Updater window.

If you chose *Download*, when the download is finished the button to the right will now say “Install”. You can complete the installation as described above at any time in the future by opening the Updater window and clicking **Install**.

- As a last step, check to make sure the update installed properly. Select the Help tab > About group > *About...* and look for the Software Version number under “This Product is Licensed To”. It should match what you downloaded.



# Section 2

## Issues Resolved in this Release

### General Information:

<b>Update Type:</b>	Software Patch
<b>Version Number:</b>	Version 28.0.0.223
<b>Date Released:</b>	September 23, 2014

### Issues Resolved:

#### In Windows-Interactive

ID	Category	Summary
ET-62294	Documentation	Documentation updated to clarify what a "clean up" is when generating a route, see pages 9 and 125 in the PC*MILER 28 User's Guide
ET-62295	Documentation	Documentation updated to clarify the use of latitude/longitudes with street addresses when geocoding, see page 59 in the PC*MILER 28 User's Guide
ET-61499	Documentation	Documentation updated to clarify what "Status" refers to in the RouteSync Invitation List, see page 188 in the PC*MILER 28 User's Guide
ET-61150	Map	In the Map's Road Legend, fixed a display issue when the Map Style was set to Default, Contemporary, Classic or Road Atlas where "Interstate Toll" roads were displayed differently in the map legend vs. what was displayed on the map
ET-61180, ET-63747	Map	On the Map, updated the Satellite map imagery provider to MapBox (NOTE: if the new image does not display, users should delete the mymap.cfg file from the ...\\PCMILER28\\App folder to allow for the map 's display to refresh and show the updated satellite map imagery)
ET-61668	Map	On the Map, after switching a data set in the Change Data Set menu, fixed an issue where the right-mouse map menu was not displaying
ET-62342	Map	On the Map, fixed an issue where a road closure was not being displayed for special time-based closures that do not have a end date or time defined in the map data
ET-62614	Map	In the Map panel, fixed a display issue when the active map data set's name wasn't displaying in the Map panel title
ET-62771	Map	On the Map, fixed an issue where modified map features were being overwritten if the Avoids/Favors Manager window was launched and map features were changed in that window
ET-62901	Map	On the Map, fixed an issue where the right-mouse menu was not accessible if the Avoids/Favors Manager window was launched and the map was manipulated in that window
ET-47183	Map	When a Proxy Server is defined, fixed an issue related to the display of Satellite map imagery

ET-62180	Multi-Users	For multi-user installs that have opted for shared network settings, fixed an issue when modified settings were not being saved
ET-62104	Reports	When generating a report, fixed an issue when the computer where PC*MILER is installed to doesn't have a default printer setup as the default
ET-62135	Reports	In the Detailed Report in Print Preview mode, fixed a display issue in the route's vehicle configuration section
ET-62157	Reports	In the Comparison Report, fixed an issue when a route's visibility is turned off and the report is closed, the route would not show up on the Map until the route window was fully closed then reopened
ET-62680	Reports	In Reports, fixed display issue when the active map data set's name wasn't displaying in the footer
ET-62073	Route Window	In a Route window, fixed a sorting issue in the pick list of returned matches when a "ZIP + city name + state" format was inputted as a stop
ET-59890	Routing	When generating 53' Trailer or Twins routes, fixed the erroneous warnings of "not designated as 53-foot" reported on road segments that are short connectors between exit ramps and jug handles
ET-62211	Routing	Fixed a crash when running a route that crossed into the boundaries of several defined geofences
ET-60694	Routing Options	In Route Options, fixed a Cost discrepancy when switching between miles and kilometers
ET-60305	Routing Options	When setting a route's Stop Costs, fixed an issue when checking the "Use Origin Cost and Hours For All Stops" was not applying cost values entered to all stops
ET-63700	Routing Options	In Route Options, fixed an issue when a saved route's "Route Name" was not appearing when the route was reopened
ET-62709	Routing Options	In Route Options, fixed a display issue in Route Profile drop down where a selection was displayed even if a profile was not selected
ET-61236	User Interface	When floating a window over the map window, fixed the issue when the map was not redrawing attributes correctly
ET-62018	User Interface	In the Import Custom Place Wizard, clarified the on screen instructions in the lower left hand corner of the window
ET-62555	User Interface	When adding or importing custom places, fixed an issue that allowed duplicate custom place names to be entered
ET-62734	User Interface	In the User Interface, fixed an issue with a crash when the UI was launched on a Windows Server 2003 Terminal Server
ET-62899	User Interface	In the User Interface, fixed an issue with a crash when the UI was launched and a fatal exception error was returned
ET-63157	User Interface	In the User Interface, fixed an issue in the Geofence.db file were after exiting PC*MILER the file created became corrupt

## Specific to RouteSync\*

ID	Category	Summary
ET-61494	User Interface	In the User Interface's RouteSync window, fixed an issue with the "Show Vehicle on Map" feature
ET-61503	User Interface	In the User Interface's RouteSync window, fixed an issue when a RouteSync blob was able to be sent to CoPilot Truck even though the invitation was declined
ET-61505	User Interface	In the User Interface's RouteSync window, fixed an issue where the Delete button needed to be clicked twice to delete a vehicle

## Specific to PC\*MILER|Connect\*

ID	Category	Summary
ET-62240	Documentation	Documentation updated to clarify a mismatch in arguments in PC*MILER Connect's PCMSSetRoadSpeedType(), see page 55 in the PC*MILER Connect User's Guide
ET-60973	Documentation	Documentation updated to clarify the parameters in PC*MILER Connect's PCMSSetVehicleType, see page 49 in the PC*MILER Connect User's Guide
ET-61990	Interface	In PC*MILER Connect, fixed an issue in PCMSLookup() where extended error codes were not working
ET-62272	Interface	In PC*MILER Connect, fixed an issue in PCMSGetMatch() and PCMSGetStop() when a "latlong;address" format was passed and a city name was not being returned in results along with the latlong and address
ET-62409	Interface	In PC*MILER TCP/IP, fixed an issue with the ability to launch pcmsock.exe and starting the service on a local computer in a Windows 32-bit application
ET-62162, ET-62415	Interface	In PC*MILER Connect, fixed a routing issue when configurations set in PCMSSetVehicleConfig() match vehicle type=auto and Shortest routing was also selected
ET-62589	Interface	In PC*MILER Connect, when using APIs such as PCMSLookup, fixed an issue when searching for POIs and the returned list didn't include the state abbreviation of a match
ET-63123	Interface	In PC*MILER Connect, fixed an issue geocoding Canadian addresses using PCMSLookup and PCMSGetMatch
ET-63683	Interface	In PC*MILER Connect, fixed an issue with SetLabel() in PCMGPlotPin and PCMGSetInfoLabels

## Specific to PC\*MILER|Energy\*

ID	Category	Summary
ET-62970, ET-63306	Reports	In PC*MILER Energy, fixed an issue in the State/Country Distance Report where the "Energy" column was not displayed
ET-63305	Reports	In PC*MILER Energy, fixed an issue in the Road Type Report where the "Energy" column was not displayed
ET-63305	Reports	In PC*MILER Energy, fixed an issue in the Drivers Report where the "Energy" column was not displayed
ET-63434	Reports	In PC*MILER Energy, fixed an issue where reports were not reporting mileage on Energy Roads correctly

## Specific to PC\*MILER|Mapping\*

ID	Category	Summary
ET-62934	Documentation	Documentation updated to correct a typo stating that PC*MILER Mapping's FrameTrip only had one parameter, see the PC*MILER Mapping's COM Server Help file (the .chm file)
ET-60785	Interface	In PC*MILER Mapping, fixed an issue with Drag Routing not functioning as documented
ET-63925	Interface	In PC*MILER Mapping, the feature to show/hide layers inCOM has been fixed so that all elements of a given layer are properly shown or hidden based on what API the end user invokes

## Specific to PC\*MILER|Spreadsheets\*

ID	Category	Summary
ET-59703	Interface	In PC*MILER Spreadsheets, fixed the -1 result when requesting a Mexican Postal Code even if the interface was set to use both US and Mexico Default ZIPs
ET-61553	Interface	In PC*MILER Spreadsheets, fixed a display issue in the Location Lookup feature that wasn't allowing the results window to be expanded to see results

## Specific to PC\*MILER|Streets\*

ID	Category	Summary
ET-62160	Geocoding	When geocoding an address, fixed an issue interpreting "Second" and "2" in the address
ET-62291	Geocoding	When geocoding an address using the "latlong;address" format, fixed an issue where distance results and driving directions were not including the cleanup distance from the latlong to the street in results
ET-62335	Geocoding	When geocoding an address using the "latlong;address" format, fixed an issue where distance results and driving directions were not including the cleanup distance from the latlong to the street in results
ET-62338	Geocoding	When geocoding using the "latlong;address" format, fixed a calibration issue with the matching distance threshold



### Specific to PC\*MILER|Tolls\*

ID	Category	Summary
ET-46139	Reports	In PC*MILER Tolls, fixed an issue when requesting a time-of-day toll cost where the toll reported was defaulted to the peak-hour toll cost instead of the specific time-of-day cost

### Specific to PC\*MILER|Traffic\*

ID	Category	Summary
ET-54561, ET-61904	Routing	In PC*MILER Traffic when generating time-based routes, fixed an issue when real-time traffic was being used in route calculations even if the arrival/departure settings weren't set to a current date/time
ET-60601	Map	In PC*MILER Traffic, fixed an issue with traffic data displaying as straight lines on the map

**\*NOTE:** *Additional license applies.*

# Section 3

## Contact Information

---

### PC\*MILER Technical Support.

H: 9:00 AM – 5:00 PM EST, Monday-Friday,  
except U.S. holidays

P: 800-377-6453, ext. 2

P: 609-683-0220, ext. 2 (outside the U.S.)

F: 609-252-8108

W: <http://www.pcmiler.com/support>

E: [pcmsupport@alk.com](mailto:pcmsupport@alk.com)

### PC\*MILER Sales.

H: 9:00 AM – 5:00 PM EST, Monday-Friday,  
except U.S. holidays

P: 800-377-6453, ext. 1

P: 609-683-0220, ext. 1 (outside the U.S.)

E: [sales@alk.com](mailto:sales@alk.com)

F: 609-252-8108

W: [www.pcmiler.com](http://www.pcmiler.com)

### About ALK Technologies

ALK Technologies, a global leader in GeoLogistics™ and navigation software is focused on developing innovative solutions for transportation, logistics, and mobile workforces. For more than 30 years, ALK has led the transportation industry with high-quality routing, mileage, and mapping solutions. ALK Technologies, Inc. is part of Trimble's® (NASDAQ: TRMB) International Transportation and Logistics Division.

For more information on ALK Technologies, visit: [www.alk.com](http://www.alk.com) or follow us at:

<https://twitter.com/ALKTech>

<http://blog.alk.com/>